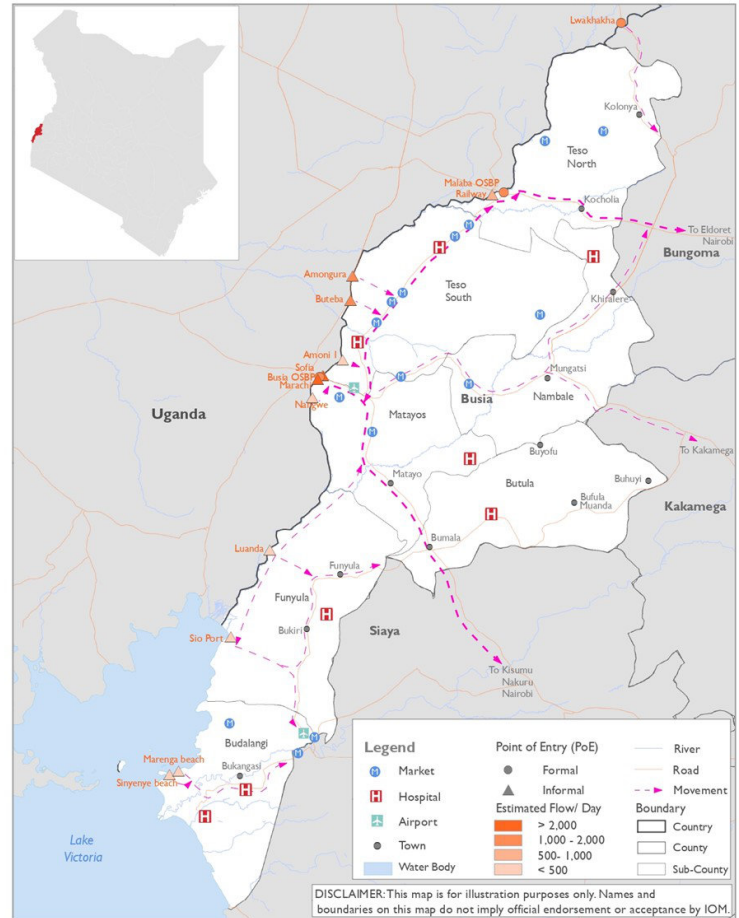


OVERVIEW

On 18th October 2022, IOM conducted a Participatory Mapping Exercise (PME) in coordination with the Kenyan Ministry of Health (MoH) Department of Public Health, Port Health, and the Ministry of Interior through the County Government and County Community Policing leadership to enhance Ebola preparedness at the Points of Entry (PoEs). The Participatory Mapping Exercise (PME) and site evaluations were conducted as part of **Population Mobility Mapping (PMM)** to analyze the population mobility dynamics along the Kenya-Uganda border in Busia County and Lwakhakha PoE. The objective of these exercises was to identify priority sites where active surveillance, prevention, and Risk Communication and Community Engagement (RCCE) can be enhanced.

20 Key informants were identified collaboratively by the MoH, Busia County Commissioner, and IOM. Through facilitated discussions, participants were able to list and prioritize PoEs based on direct connectivity to the ongoing outbreak locations and estimated volume of travelers, the availability of **RCCE**, as well as connectivity with mobility routes, and accessibility within the 5 Sub-Counties that border Uganda in Busia County (Teso North, Teso South, Matayos, Samia, and Bunyala). All key informants were encouraged to use their day-to-day knowledge of the community and the locations of interest within the county. GPS coordinates were then collected to mark the points of interest during site evaluations to develop an accurate map.

Participatory Population Mobility Mapping (PMM) for Ebola Response
Busia County - Kenya



HIGHLIGHTS



22,970 individuals are estimated to cross between Uganda and Kenya per day. **76%** of these use unofficial points of entry (PoEs).



9 of the listed priority crossing points, **3** of which are gazetted, reported more than **1,000 crossings** per day while **4** of the porous points reported **2,000** or more crossings per day.



63 unofficial and official crossing points in Busia County were identified and **only 3** are gazetted.



Many crossers gather and interact **at convergence points** such as markets, bus stations, boda boda stations, and small towns where there are low levels of **Risk Communication and Community Engagement**.



14 crossing points were listed as priority with **11** of them, **3** of which are gazetted, having no health screening, reporting, or surveillance facilities.



The most reported reason for mobility is trade (reported at all PoEs), followed by employment (reported in 87% of PoEs) and seeking health care (reported in 78% of all PoEs).

FINDINGS

PRIMARY MOBILITY AXIS

Axis 1: Malaba - Nairobi

Route Malaba – Eldoret – Nakuru – Naivasha- Nairobi

Axis 2: Busia - Nairobi

Route Busia – Kisumu – Nakuru – Naivasha - Nairobi

Axis 3: Lwakhakha - Nairobi

Route Lwakhakha – Sirisia – Kimaeti – Kisumu/Eldoret

SECONDARY MOBILITY AXIS

Axis 1: Luanda - Busia/ Kisumu

Route Luanda – Matayos – Kisumu – Nakuru - Nairobi – Mombasa

Axis 2: Sio Port - Busia/ Kisumu

Route Sio Port – Bumala – Kisumu – Nakuru - Nairobi – Mombasa

Axis 3: Port Victoria - Busia/ Nairobi

Route Marenga/Sinyenye Beach – Matayos/Bumala - Kisumu – Nairobi - Mombasa

1. POINTS OF ENTRY

Prioritized Points of Entry (PoEs)

Name of PoE	Type	Type of Crossing	Estimated Daily Flow	Percentage of Daily Mobility (%)
Busia OSBP	Formal	Land	2,000	9
Malaba OSBP	Formal	Land	1,900	8
Lwakhakha*	Formal	Land	1,500	7
Sofia	Informal	Land	5,000	22
Marachi	Informal	Land	4,000	17
Amongura	Informal	Land	2,000	9
Buteba	Informal	Land	2,000	9
Luanda	Informal	Land	1,500	7
Railway	Informal	Land	1,200	5
Amoni 1	Informal	Land	500	2
Nangwe	Informal	Land	500	2
Sinyenye Beach	Informal	Water	300	1
Sio Port	Informal	Water	300	1
Marenga Beach	Informal	Water	270	1

* in Bungoma

Means for Cross-border mobility

Type of PoE	Foot	Motorcycle	Car	Bus	Truck
Official	100%	100%	100%	100%	100%
Unofficial	100%	73%	45%	18%	18%



2. HEALTH FACILITIES CLOSEST TO POINTS OF ENTRY

Health Facility	Nearest Priority Point of Entry
Busia County Referral Hospital	Busia OSBP Sofia, Marachi Amoni 1 Nangwe
Alupe Sub-County Referral Hospital *set aside as a referral facility for isolation	Malaba OSBP Amongura Buteba Railway
Sirisia Sub County Hospital	Lwakhakha
Sio-Port Sub County Hospital	Sio Port
Port Victoria Sub-County Hospital	Marenga Beach Sinyenye Beach
Kocholya Sub-County Referral Hospital	Malaba OSBP
Average Distance from PoE	Number of Facilities
<2km	4
3 – 6 km	5
7 – 10 km	1
>10 km	4

IOM ACTIVITIES ARE SUPPORTED BY:

